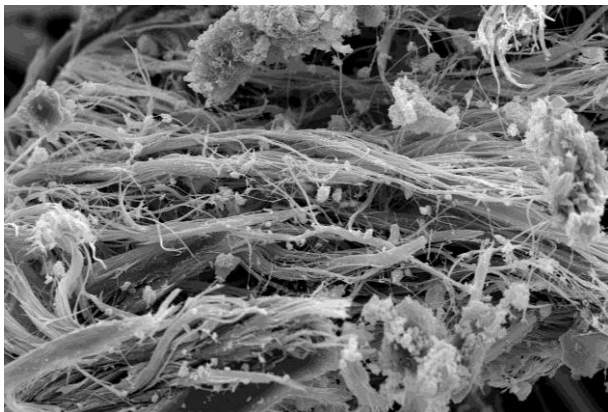


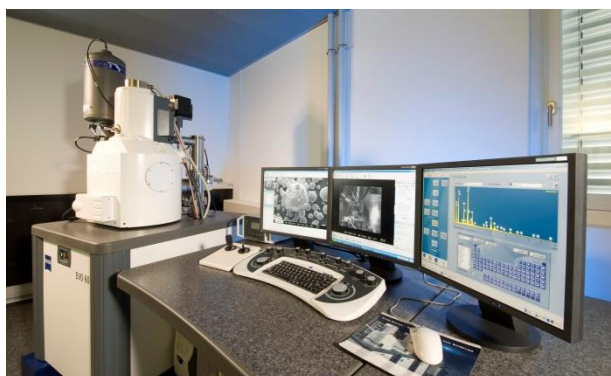
Damage and material analysis

Asbestos measurements according to VDI standard 3492

Although the use of asbestos has long been banned, this material continues to threaten human health. It is still frequently found in buildings built before 1990. Anyone who inhales asbestos fibres released during conversion, maintenance and renovation work exposes themselves to risk. We carry out preventive measurements in rooms that contain asbestos or are suspected to contain asbestos, evaluate them and provide support for further action. In addition, we carry out measurements (zone clearance measurements) to confirm the success of an asbestos removal.



Asbestos fibre sample (image with scanning electron microscope)



Scanning electron microscope with EDX analyzer

Prices

Prices: Please contact us and inquire about our attractive conditions.

Delivery time

Normally an asbestos room air measurement can be performed within 24 hours after announcement.

Evaluation of the indoor air measurements: Within a few hours after completion of sampling.

External filter evaluations: Within a few hours after receiving the samples.

Indoor air measurements

Sampling for the determination of the asbestos fibre content according to VDI standard 3492, in rooms suspected of containing asbestos and rooms containing asbestos.

Filter evaluations of asbestos room air measurements

Evaluation of filters (also of externally supplied filters) according to VDI standard 3492. modern laboratories with the necessary equipment for the subsequent filter evaluation are available for asbestos room air measurement. The scanning electron microscope and the electron beam microprobe - both with energy dispersive (EDX) analysers - and the light microscope are used for evaluation.



Sampling on site

