

Measurement and calibration

Measured variables length and torque

Measuring and torque tools require regular checks. In the measuring facilities of Qualitech AG in Winterthur and Birr the highest accuracy of calibration results is achieved. The fully automatic testing device at the Birr site, which is unique in Switzerland, allows SCS calibration of any torque wrench from 2-2100 Nm in accordance with DIN-ISO 6789. Ranges from 0.05-2 Nm are covered by a normal works certificate. Our measuring laboratories are accredited according to ISO/IEC 17025 and have a very wide range of machinery for the calibration of measuring and testing equipment, as well as for the measurement of complex components. Translated with www.DeepL.com/Translator (free version).

Services

- Calibration Measured variable Length
- Calibration Measured variable Torque
- Measuring equipment monitoring
- 3D measurements
- Consulting and training



3D measurement

Latest 3D technology and a team of experienced application engineers are the guarantee for this topic. Our experience and the accuracy of our machinery guarantee reliable measurement results.



Calibration Measured variable Length

- Parallel Ground
- Limit plug gauges
- Adjusting rings
- Thread gauges
- Caliper gauge
- Micrometers
- Dial indicators
- Inclometers
- Angle
- Quick button
- Measuring plates
- Miscellaneous



3-D measurements of components

(X=710 / Y=550 / Z=550mm - E=0.8+L/800µm [L in mm])

Our measurements comply with international standards and the equipment used is regularly checked. The measurement results guarantee results at the highest level.

Reasons for suppliers, manufacturers and end users to commission Qualitech AG as an external measurement laboratory

- The neutral dimensioning/sampling is required
- The own infrastructure does not meet the requirements
- Internal capacity bottlenecks
- Other



Calibration of torque testers and torque wrenches

Carrying out calibrations of torque testers with factory certificate using regularly calibrated calibration weights and Norbar calibration scales. With this system torques up to 1000 Nm can be generated.

Calibratable torque wrenches

- Triggering (fixed and adjustable)
- Indicating with pointer
- Displaying digital
- Torque screwdriver



Technical data torque tester

Type: Tohnichi TF2000N

Measuring range: 2 - 2100 Nm

Measuring accuracy: $\pm 1\%$.

Number of stations: 3

Verification with:TFTCL2000N calibration device and calibrated calibration weights

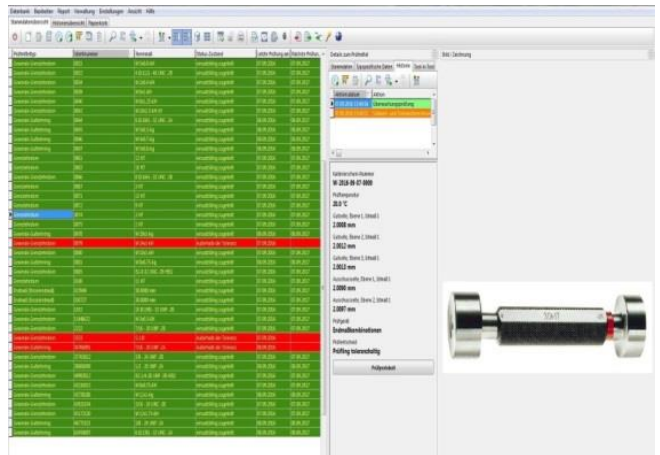


Measuring equipment monitoring

The assurance of product quality has a great influence on the competitiveness of your company. Especially in the field of mechanical manufacturing, test equipment and calibration management plays a decisive role. In addition to the general safeguarding of replacement parts and the preventive avoidance of product liability risks, it opens up many opportunities to secure the quality of the products and thus the economic success of the company. We have a proven, highly efficient solution for this.

Especially in the field of mechanical production and assembly, test equipment monitoring plays a decisive role in securing product quality and the competitiveness of a company. In detail this means:

- The stock of test equipment and the information assigned to it must be managed (recording, marking, classification).
- The use of test equipment must be controlled and compliance with calibration intervals must be ensured.
- Calibration must be performed and documented correctly and in a traceable manner.



Qualitech AG

Measurement and calibration

The many years of experience of our employees with our wide range of machinery makes us a leading partner in measurement technology and calibration. The two locations in Winterthur and Birr allow us to respond to our customers' requests in a versatile and flexible way. We consider the satisfaction of our customers as our measurement parameter and it is very important to us.